

The Horticulture and Food  
Research Institute of New Zealand Ltd

A Crown Research Institute

CONFIDENTIAL

URGENT



FACSIMILE

Hort + Research

TO: Chris Henry

ORGANISATION: Good Health Pesticide Company Ltd

FAX NO: 09 2351202

NO OF PAGES (including cover)

FROM: Peter Wood

FAX NO: 161-8-377-4181

DATE: Tue Dec 8, 1992

TIME: 10:39

SUBJECT: PRODUCT DEVELOPMENT

This information is CONFIDENTIAL and intended only for the person named above. You may not republish, retransmit or copy this document. If you receive this document in error, please notify us by telephone and we will return the document to us by mail at the address shown below. Thank you for your cooperation.

Details of  
treatments  
2% lime sulphur  
0.5% lime sulphur  
0.5% lime sulphur at 0.5%

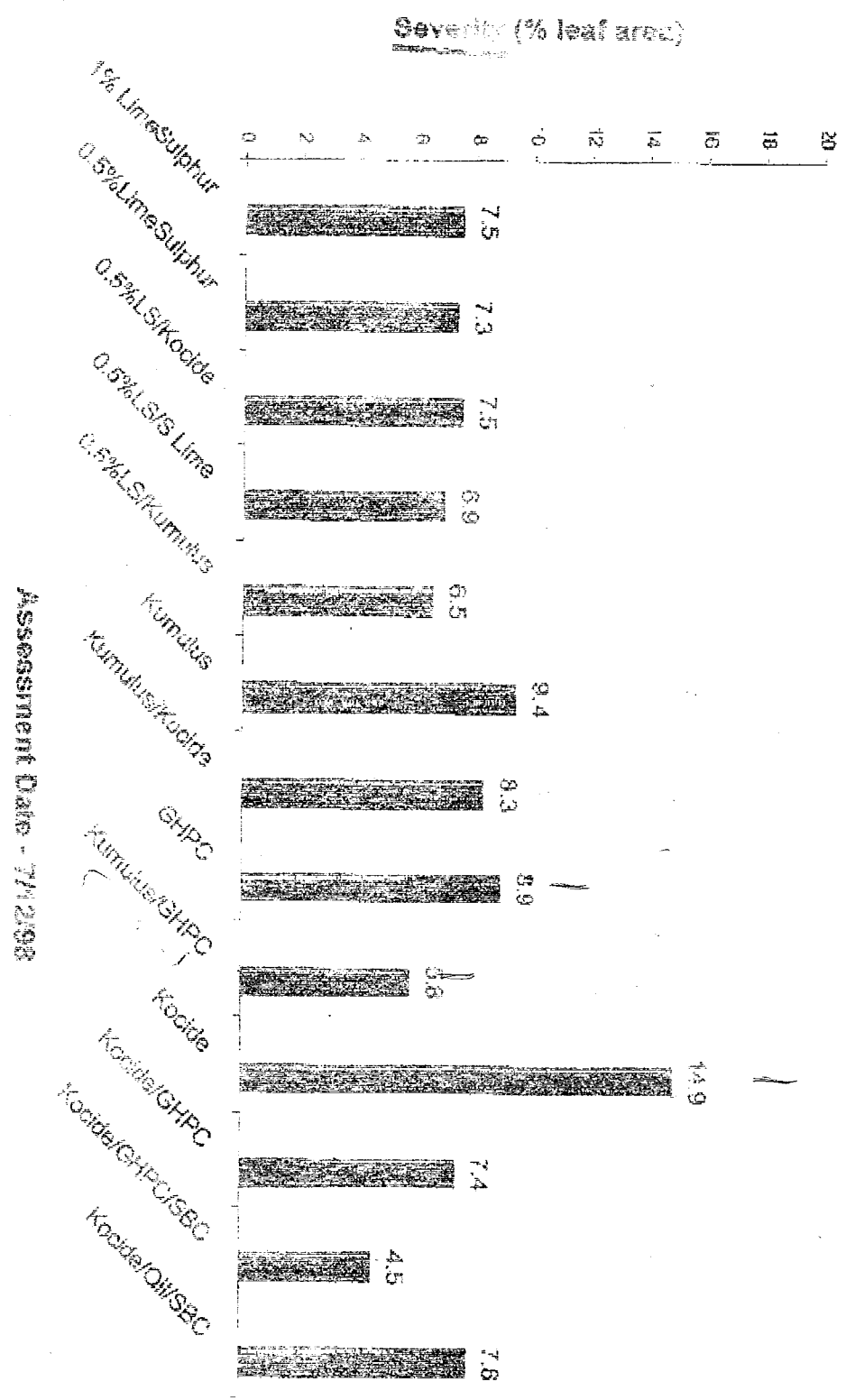
First applications of treatments from end bloom to Dec 2, before bloom the first received 2 applications of 2% lime sulphur

Did not see a difference in fireblight symptoms between treatments in the first 2 weeks. These treatments were applied post bloom.

*Peter Wood*

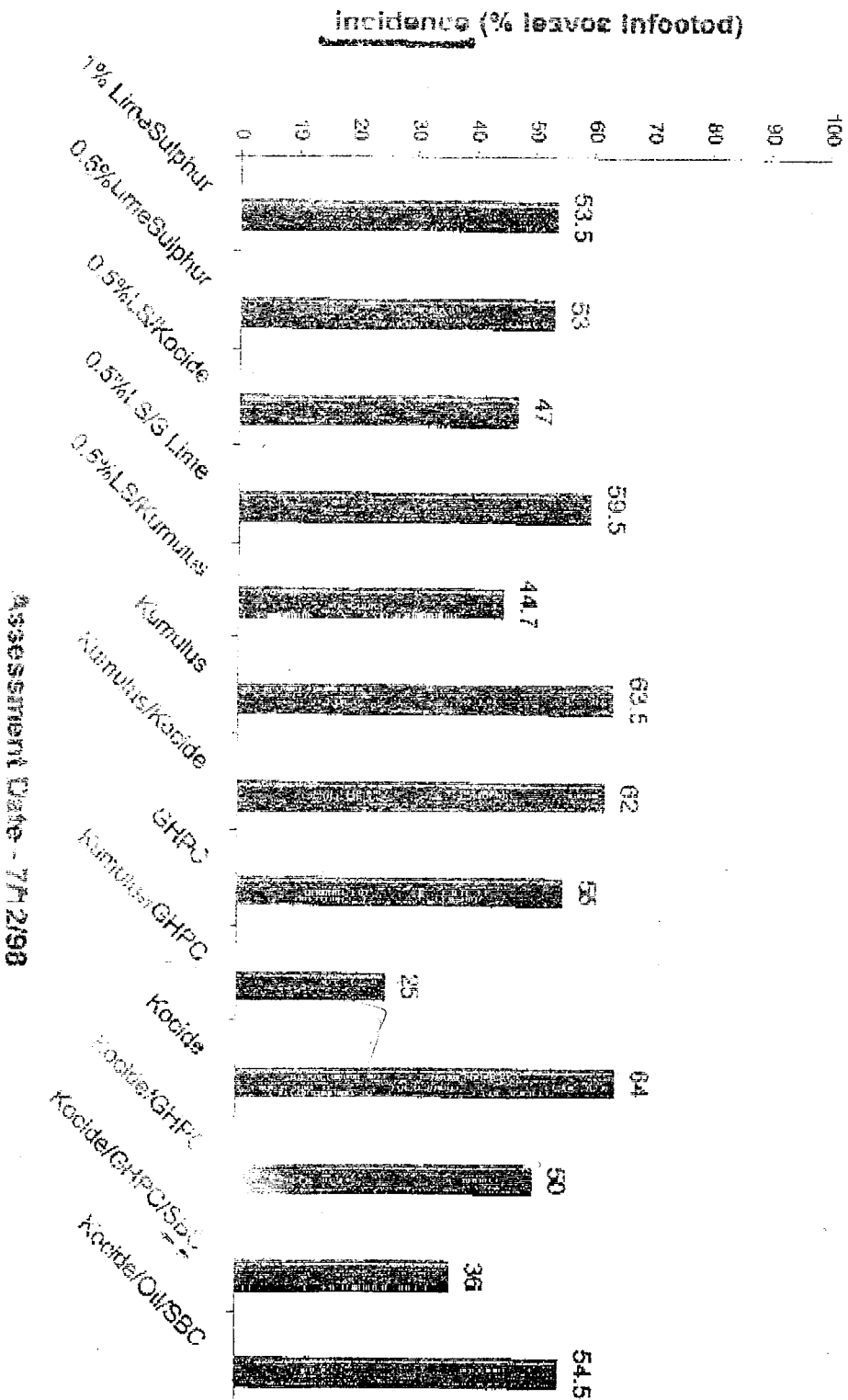
Best Wishes and Regards Peter Wood  
Plant Pathologist

### Crown Funded Trial at HortResearch, Hawke's Bay - 1998-99 season, Powdery Mildew Infection on Liberty apple leaves



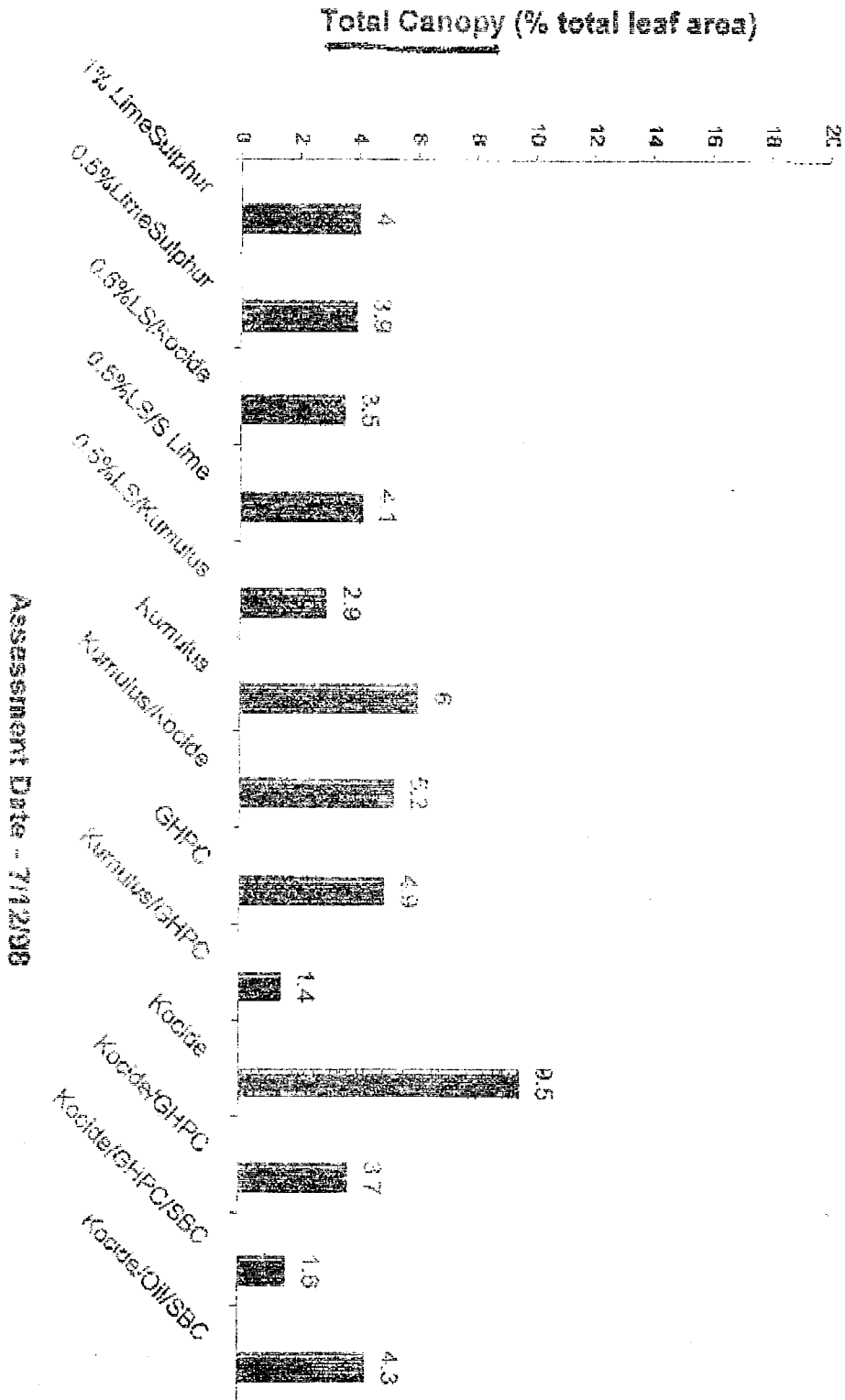
Assessment Date - 7/1/2000

### Crown Funded Trial at HortResearch, Hawke's Bay - 1998-99 season, Powdery Mildew Infection on Liberty apple leaves



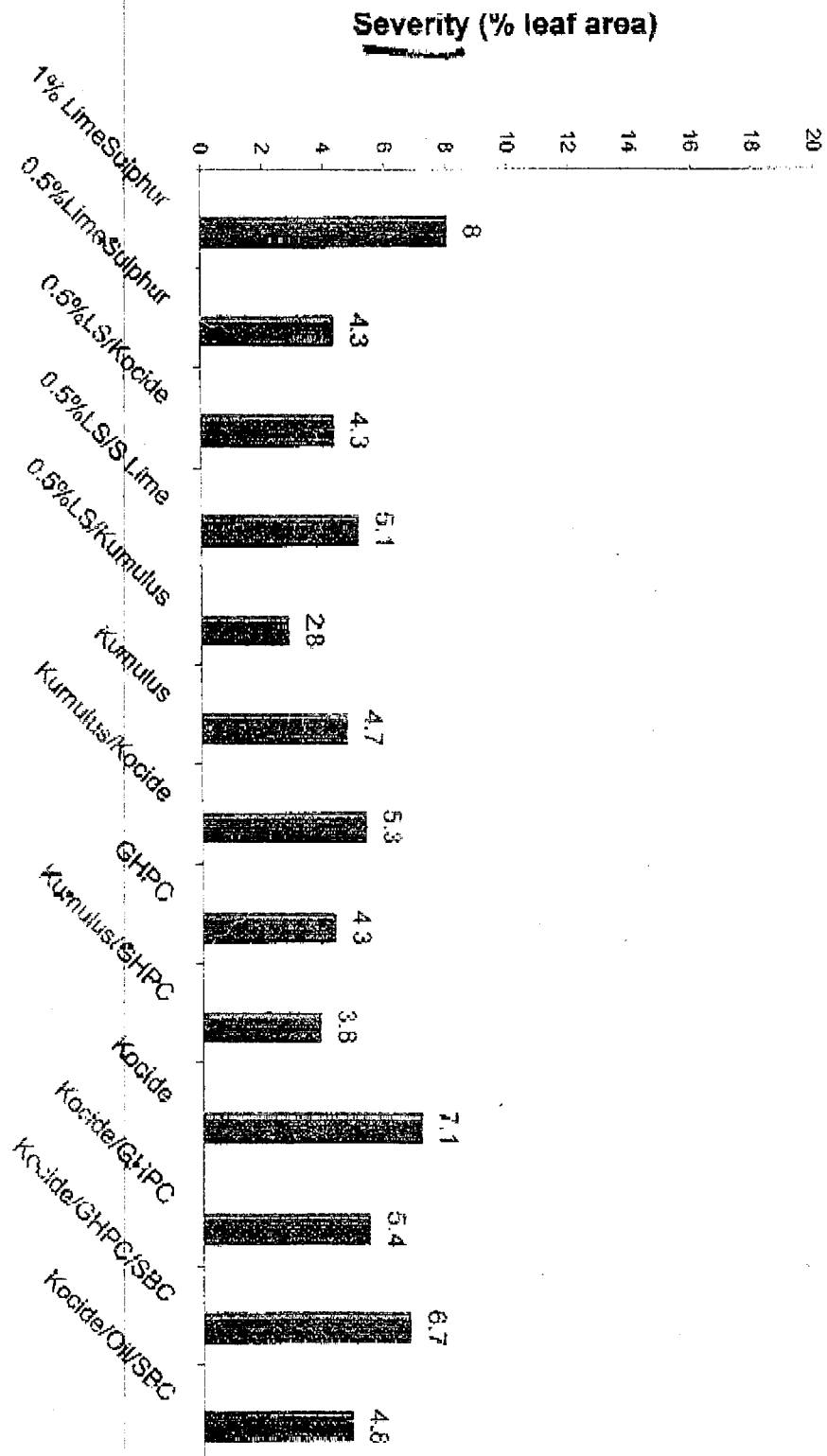
Assessment Date - 7/12/98

### Crown Funded Trial at HortResearch, Hawke's Bay - 1998-99 season, Powdery Mildew Infection on Liberty apple leaves



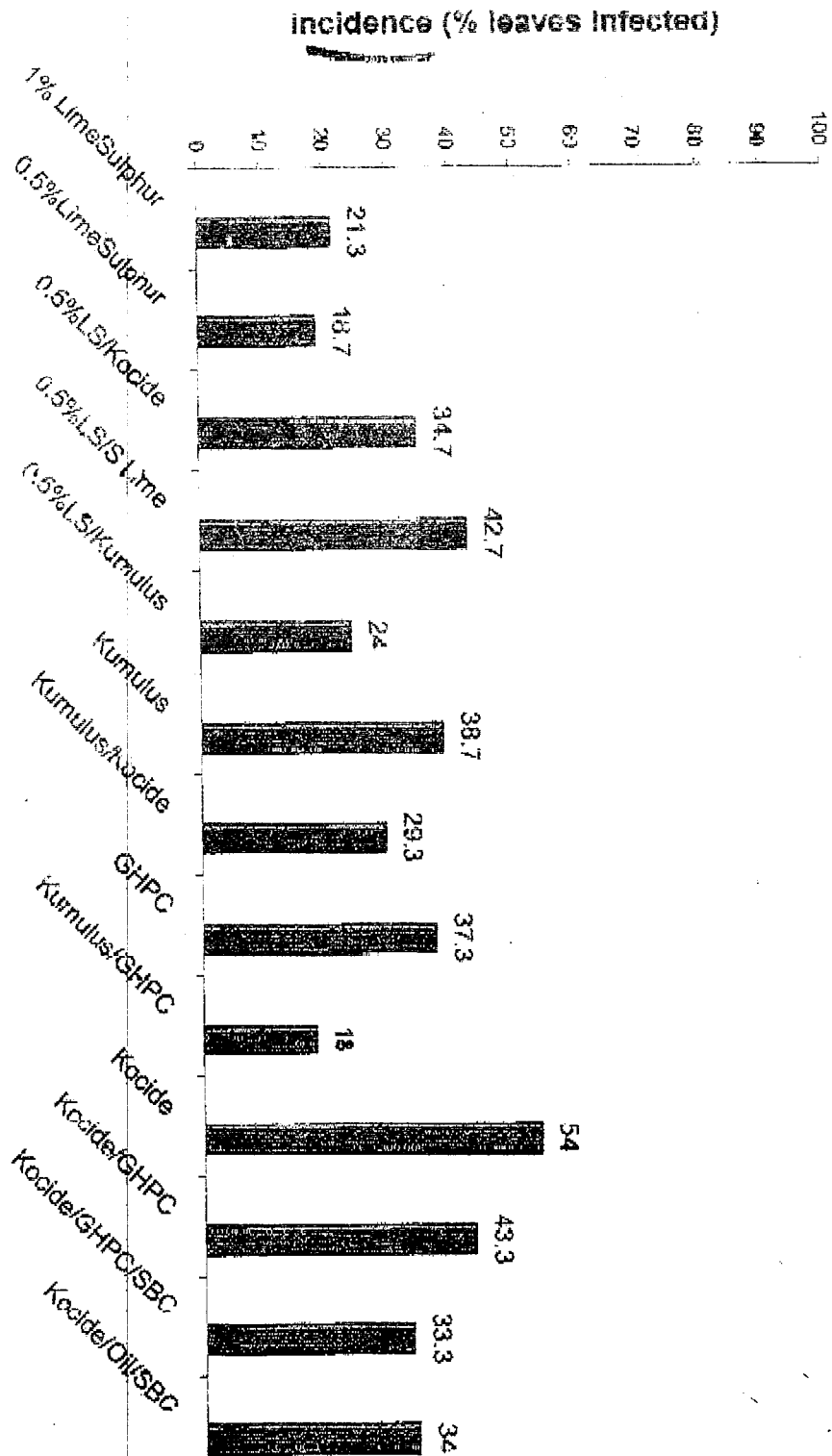
Assessment Date - 7/12/98

### Crown Funded Trial at HortResearch, Hawke's Bay - 1998-99 season, Powdery Mildew Infection - GALN Apple leaves



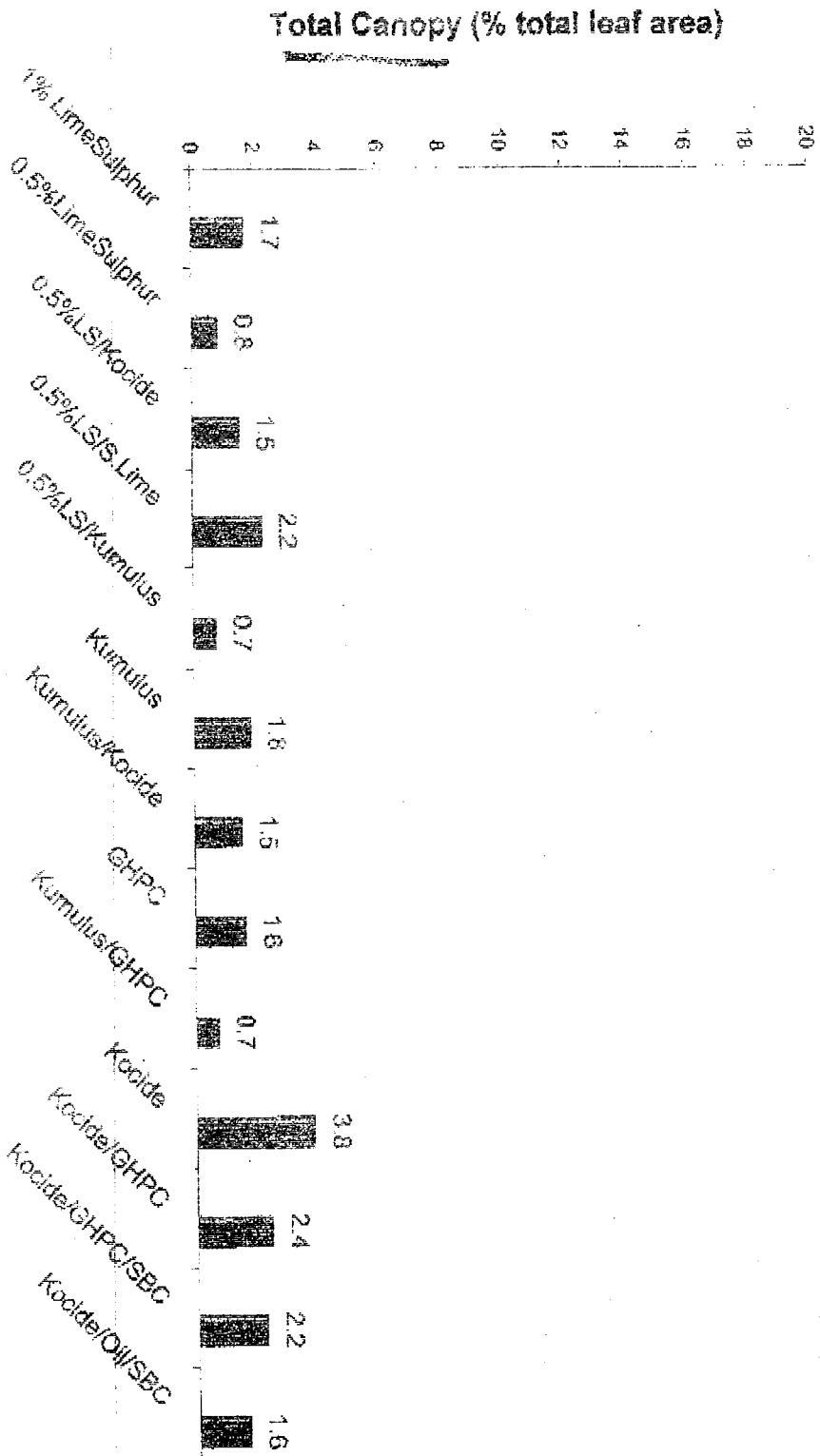
Assessment Date - 7/12/98  
 [LS = Limesulphur, SBC = sodium bicarbonate, GHPC = soap]

### Crown Funded Trial at HortResearch, Hawke's Bay - 1998-99 season, Powdery Mildew Infection on GALA apple leaves



Assessment Date - 7/12/98  
 [L.S = Limesulphur, SBC = sodium bicarbonate GHPC = soap]

### Crown Funded Trial at HortResearch, Hawke's Bay - 1998-99 season, Powdery Mildew Infection on GALA apple leaves



Assessment Date - 7/12/98  
LS = Limesulphur, SBC = sodium bicarbonate, GHPC = soap